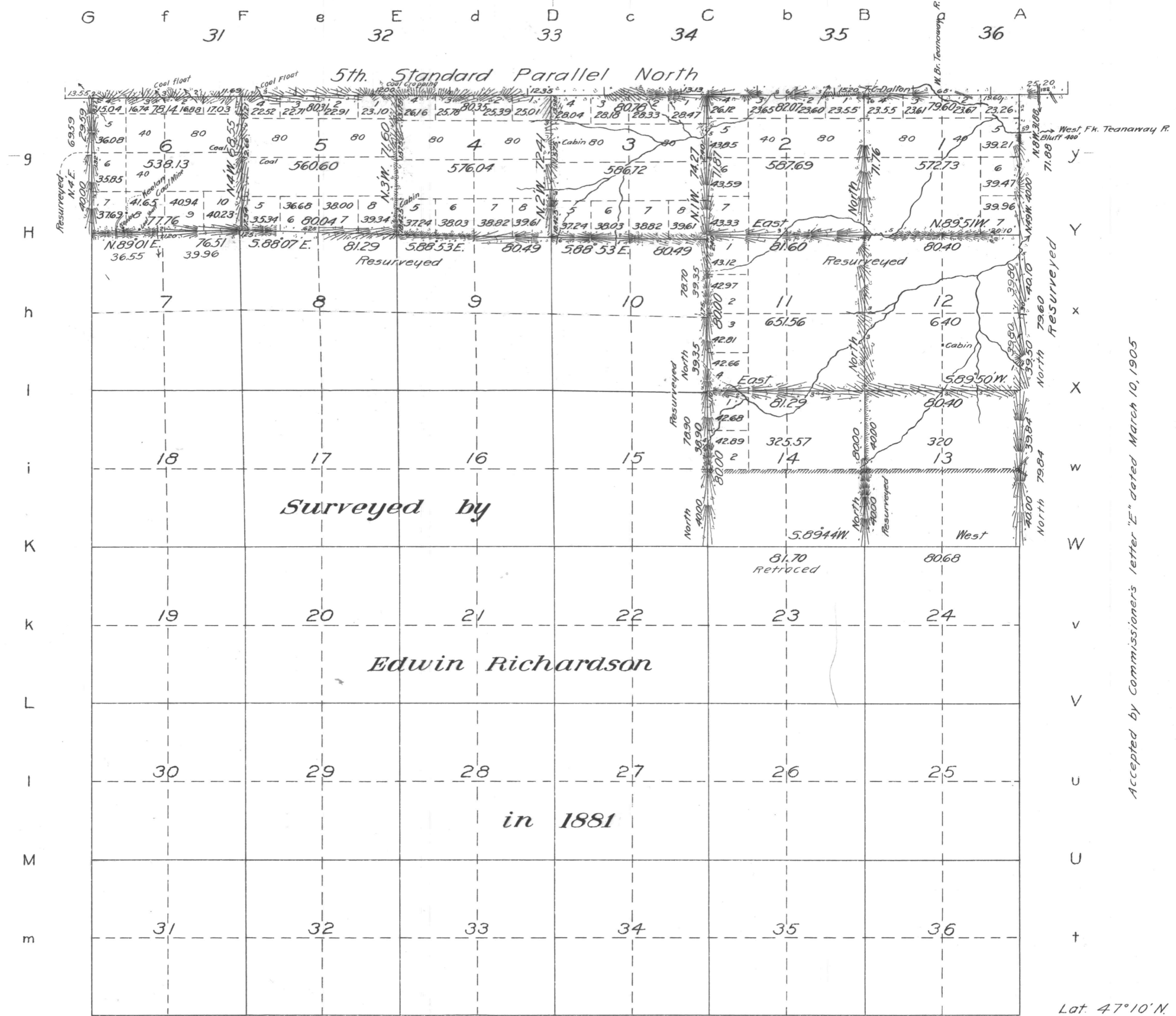


20-15-A+

TOWNSHIP No. 20 NORTH, RANGE No. 15 EAST, WILLAMETTE MERIDIAN, WASHINGTON.



Area in Acres	
Public Land	5359.04
Indian Reservation	
Indian Allotments	
Mineral Claims	
Water Surface	
Total Area	5359.04

Scale: 40 Chains to an inch

Mean Mag. Decl. 22° 23' E

Surveyed by  
**Edwin Richardson**  
in 1881

Accepted by Commissioners letter "E" dated March 10, 1905

Lat. 47° 10' N.  
Long.

Surveys Designated	By Whom Surveyed	Contract No.	Contract Date	Amount of Surveys			When Surveyed	
				Ms.	Chs.	Lks.	Begun	Completed
Subdivisions	Moses M. Emerson	Sp. Ins.	March 31, 1903	8	00	28	July 23, 1903	Aug. 11, 1903
Connections	"	"	"	64	37		"	"
Resurvey E. and W. Bdrs.	"	Sp. Ins.	March 31, 1903	3	32	64	July 20, 1903	Aug. 8, 1903
Resurvey Subdivisions	"	"	"	8	38	38	"	"
Retrace Subdivisions	"	"	"	1	01	70	"	"
East Boundary	Edwin Richardson	252	July 26, 1879				June 25, 1880	June 26, 1880
5th Std. and W. Bdy. Sec. 6	Moses M. Emerson	355	April 20, 1891				July 2, 1891	July 10, 1891

The above map of Township No. 20 North, of Range No. 15 East of the Willamette Meridian, Washington, is strictly conformable to the field notes of the survey thereof on file in this Office which have been examined and approved.  
Surveyor General's Office  
Olympia, Washington  
November 16, 1904

*E. K. Kingsbury*  
Surveyor General, Washington